

QUALITY PUMPS - APV - MONO - GRUNDFOS - LABOUR - I/DRESSER



**400 LPM S/S MONO PUMP TYPE SH80
BEFORE AND AFTER REFURBISHMENT**



STOCK CODE: N9976-34
400 LPM S/S MONO PUMP TYPE SH80. STAINLESS STEEL 400 LPM AT 7M HEAD WITH 80MM DIA IN/OUTLET CONNECTIONS. PACKED GLANDS WITH PRESSURE RELIEF. DRIVEN BY 5.5KW 1440 RPM BELT DRIVE. MOUNTED ON BASE FRAME 460MM X 1220MM X 900MM TALL.



Gravel Hill Lane, Whitley, Nr Goole, E Yorkshire, DN14 0JJ
Tel. +44(0)1977 661095 Fax. +44(0)1977 662165
Web Site: www.rigal-bennett.com
Email: sales@rigal-bennett.com



EST. 1970

THINK GREEN - WE RECYCLE - YOU REUSE

No 135



STOCK CODE: N10460-10
600L S/S JKTD U-TROUGH MIXER 850MM X 1020MM X 1020MM DEEP

STOCK CODE: N10470-03
R&B V/SPEED SHEARHEAD MIXER 4KW V/SPEED 3PH



STOCK CODE: NS10110-07
64,000L S/S 304 ENCL VERT STORAGE TANKS

P-P-PICK UP A BARGAIN TODAY

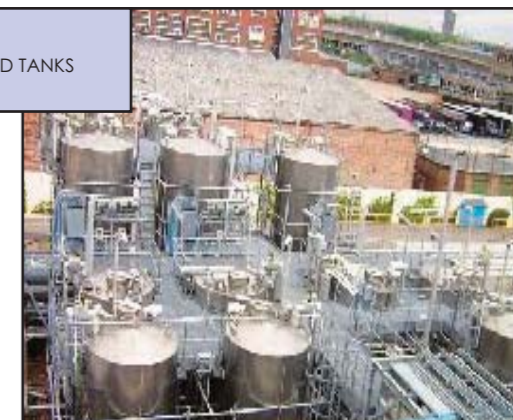


STOCK CODE: N10467-12
FRYMA COLLOID MILL S/S MZ100-R 5.5KW



STOCK CODE: NS10111-07
32,000L S/S VERTICAL ENCLOSED TANKS

STOCK CODE: N10137-10
1000L S/S WINKWORTH RT1000 SS 30KW MIXER



**WE CAN SAVE YOU 50% OF YOUR EQUIPMENT COSTS WHEN YOU BUY USED PLANT
CALL US +44(0)1977 661095 FAX +44 (0)1977 662165**



STOCK CODE:
N10005-03
2.8/5.5KW S/S
YSTRAL MIXER
FLP



STOCK CODE:
N10451-03
5.5KW GXT
SILVERSON
SHEARHEAD
MIXER



STOCK CODE:
N10446-03
MAELSTROM
ICV100 INLINE
MIXER 55 KW



STOCK CODE: N10175-07
450L S/S OPEN TOP HEMISPHERICAL PAN



STOCK CODE:
N10035-07
850L S/S OPEN
TOP TROLLEY
TANK



STOCK CODE:
N10034-07
700L S/S OPEN
TOP TROLLEY
TANK



STOCK CODE: NS0025-03
SILVERSON INLINE MIXER 700L 30KW



STOCK CODE: NS0007-03
2000L M/S MASTERMIX COMBINATION MXR



STOCK CODE: NS0018-22
1600KW CONTRAPOL THERMAL FLUID HTR



STOCK CODE:
N9745-07
2250L OPEN
TOP MIXING
TANK



STOCK CODE: N10393-07
25000L S/S VERTICAL ENCLOSED TANK



STOCK CODE: N10394-07
12500L S/S VERTICAL ENCLOSED TANK



STOCK CODE:
N7275-17
BROADBENT
46A S/S 600
MM DEEP
PLOWING
CENTRIFUGE



STOCK CODE: RC1236A-17
WESTFALIA DECANTER S/S UCD 205-00-32



STOCK CODE:
RC1236-17
WESTFALIA
DISC STACK
CENTRIFUGE
SC20-01



STOCK CODE:
N10248-07
400L S/S ENC
TANK ON
CASTORS



STOCK CODE:
N10071-07
250L S/S ENC
TANK ON
CASTORS



STOCK CODE:
N10463-07
2000L S/S VERT
JACKETED
ENCLOSED
TANK



STOCK CODE: RC1181E-17
SHARPLES DECANTER CENTRIFUGE P2000



STOCK CODE: N10282-49
SIMON HEESSEN ORBITAL PELLET PRESS



STOCK CODE: SF501-39
NEW R-B 50MM. DIA S/S SCREW FEEDER



STOCK CODE: NS0082-05
2400L S/S VERTICAL INT.COIL P/ VAC TANK



STOCK CODE:
N7814-04
390 L S/S JKTD
OPEN TOP
PAN



STOCK CODE:
N9828-01
250L S/S HEMIS
ANCHOR
MIXING TANK
1.5KW



DON'T GO NUTS

BUY USED



STOCK CODE:
N10443-13
NIRO MOBILE
MINOR SPRAY
DRIER
ELECTRIC



STOCK CODE: N7596-13
BUSS 12000 L S/S PADDLE VACUUM DRIER



STOCK CODE:
N9961-01
720L S/S APV
JKTD SCRAPPED
ANCHOR
MIXER



STOCK CODE:
N10313-01
6250L S/S VERT
JKTD MIXING
TANK



FULL PROCESS PLANT

OR 'BEAR' ESSENTIALS



STOCK CODE: N10278-33
700 LPM S/S FRISTAN PUMP FP1742



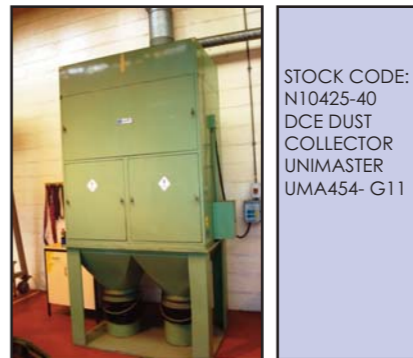
STOCK CODE: N8038-34
600 LPM S/S IIT JABSCO LOBE PUMP



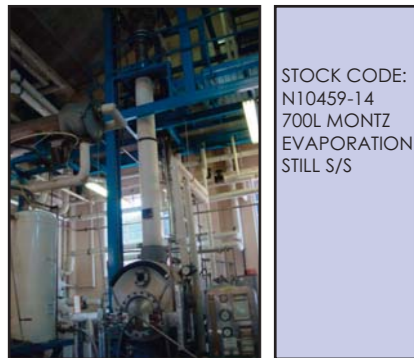
STOCK CODE: N9100-34
28 LPM MONO PUMP SH32



STOCK CODE: N8126-13
APV MITCHELL HALAR LINED VAC OVEN



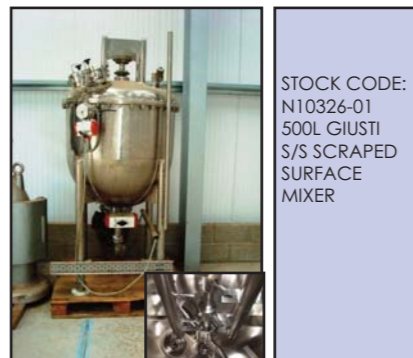
STOCK CODE: N10425-40
DCE DUST COLLECTOR UNIMASTER UMA454- G11



STOCK CODE: N10459-14
700L MONTZ EVAPORATION STILL S/S



STOCK CODE: NS0107-36
CHEMVAC S/S VACUUM PUMP 7.5KW



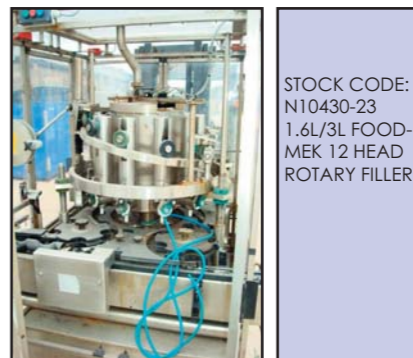
STOCK CODE: N10326-01
500L GIUSTI S/S SCRAPED SURFACE MIXER



STOCK CODE: NS0076-01
18,500L S/S LIMPET COIL REACTOR



STOCK CODE: N9176-14
BUSS-LUWA VERT 2 STAGE EVAPORATOR



STOCK CODE: N10430-23
1.6L/3L FOOD-MEK 12 HEAD ROTARY FILLER



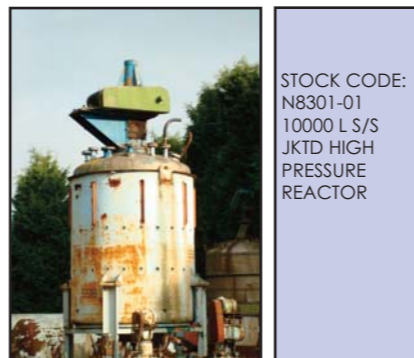
STOCK CODE: N10359-23
NODSTOP TWIN HEAD FILLER UP TO 1L



STOCK CODE: NS0080-01
10,000L S/S LIMPET COIL REACTOR



STOCK CODE: N5768-01
300 L S/S HIGH PRESSURE JKTD REACTOR



STOCK CODE: N8301-01
10000 L S/S JKTD HIGH PRESSURE REACTOR



STOCK CODE: N10358-23
WARD BEKKER CHECK WEIGHER S/S LZ-SHD



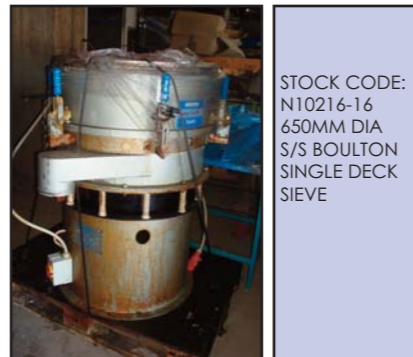
STOCK CODE: RC1197-23
ADPAK SHRINK WRAP TUNNEL & SEALER



STOCK CODE: N10250-18
0.3 M.SQ. PHARMALAB LEAF FILTER



STOCK CODE: N10030-16
480MM DIA S/S BOLT ON SINGLE DECK SIEVE



STOCK CODE: N10216-16
650MM DIA S/S BOLT ON SINGLE DECK SIEVE



STOCK CODE: S9818-16
POWTEK TYPE S/S ROTARY SIEVE



STOCK CODE: NS0054-18
AMAZON DUPLEX S/S FILTER 2BF2



STOCK CODE: N10436-18
10.7 SQ.M CHEMAP(FUNDA) FILTER R-10



STOCK CODE: RC1165-11
HOSOKAWA ALPINE CLASSIFIER 200/4ATP

RIGAL BENNETT

OFFER US YOUR SURPLUS EQUIPMENT

CONTACT US NOW
Email: sales@rigal-bennett.com
Tel: +44(0)1977 661095
Fax: +44(0)1977 662165



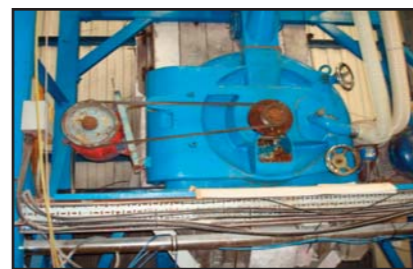
STOCK CODE: N9787-26
MANESTY F3 SINGLE PUNCH TABLET PRESS



STOCK CODE: NS0008-08
45000L M/S VERTICAL ENCLOSED TANK



STOCK CODE: N9881-11
STURTEVANT ROLL CRUSHER 200 X 250MM



STOCK CODE: RC1020-11
ALPINE CONTRAPLEX MILL CW400



STOCK CODE: N9895-11
STURTEVANT JAW CRUSHER 250MM X 75MM



STOCK CODE: N9888-11
HOSOKAWA MIKROPUL ACM15 MKII



STOCK CODE: NS0005-12
20L M/S NETZSCH MASTERMIX TIGER MILL 22K



STOCK CODE: N9940-12
200L S/S HOZ NETZSCH BEAD MILL 75KW



STOCK CODE:
S6257-10
90L LODIGE
MORTON
PLOUGH-
SHEAR MOD
MOOD



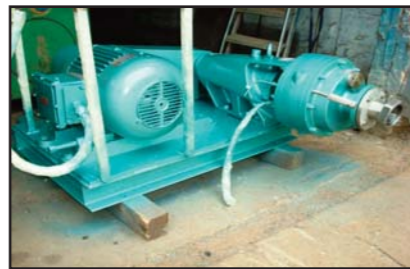
STOCK CODE: N9727-10
250L LODIGE S/S PLOUGHSHEAR FM-300D



STOCK CODE:
N9189-10
110L S/S
GARDNER
U-TROUGH
MIXER



STOCK CODE:
N10173-01
20L PROBST &
CLASS
REACTOR/
COLLOID
MILL



STOCK CODE: S7363-12
SIEFER S/S HOMOGENISER TYPE SM180 15 KW



STOCK CODE: N10465-12
OAKES MIXER MODEL TYPE 8M-TS1A



STOCK CODE: N10211-10
2000L S/S U TROUGH MIXER



STOCK CODE:
N10420-09
600L VMI
RAYNERI VAC
MIXER
PH600IDT



STOCK CODE: N10241-09
1,000L DRAIS VAC PLANETARY MIXER FH1000



STOCK CODE:
N8421-19
3 SQ.M. APV
PLATE HEAT
EXCHANGER
TYPE HXU6



STOCK CODE:
NS0052-19
61.2 SQ.M. S/S
SHELL & TUBE
CONDENSER



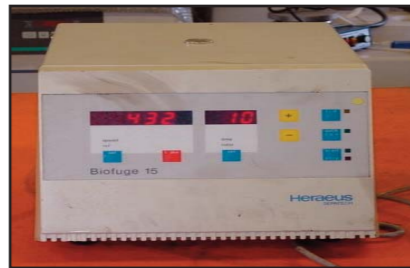
STOCK CODE: N10021-09
600L PAPANMEIER HIGH INTENSITY MIX TS630



STOCK CODE: N8185-10
T.K.FIELDER RAPID H/SPEED MIXER HMA150



STOCK CODE: NS0047-19
10 SQ.M. S/S SHELL & TUBE CONDENSER



STOCK CODE: S9872-50
HERAEUS BIOFUGE 15



STOCK CODE:
N10445-50
150L HERAEUS
VOTSCH
CLIMATIC
VTRK150



STOCK CODE: N5999-24
10L MORTON GRIDLETTE SML S/S CAKE MIX



STOCK CODE: N9598-59
6L BAKER PERKIN NEBAN BLADE S/S JKTD MX



STOCK CODE: N10417-09
250L S/S STEELSHAW Z BLADE MIXER



STOCK CODE: N10233-51
PERKIN ELMER AUTOSYST XL GAS CHROMAT



STOCK CODE:
N10419-49
BERGMAN
ROTARY
WASTE
COMPACTOR
PS1800



STOCK CODE:
N7366-10
110 L S/S
DOUBLE CONE
BLENDER
1.5 KW



STOCK CODE: N8994-09
900L BAKER PERKINS M/S JKTD Z BLADE



STOCK CODE:
N10009-09
250L M/S
MORTON
GRIDLETTE
MIXER GL55



STOCK CODE: S9000-33
583 LPM ALFA LAVAL S/S PUMP 7.5 KW