



ROUSSELET
ROBATEL

PRODUCTION SCALE VERTICAL AXIS BASKET CENTRIFUGES WITH REMOVABLE FILTER BAG



For solid / liquid separations in various industries :
Chemical, Pharmaceutical, Food, Plastics, Textile, Metals...



RC 120 Vx KSA.R

These centrifuges, to which ROUSSELET ROBATEL has made continual technical improvements, allow us to continue to respond to increasingly demanding fabrication standards required by our customers, while at the same time, maintaining a simple design :



SC 100 Vx KSA.R



RC 85 Vx KSA.R

➤ Easy to use

Cake discharge via removable filter bag, manual or automatic cycle control.

➤ Easy in install

Can be installed on a ground or mezzanine floor without the need for complex accessory equipment.

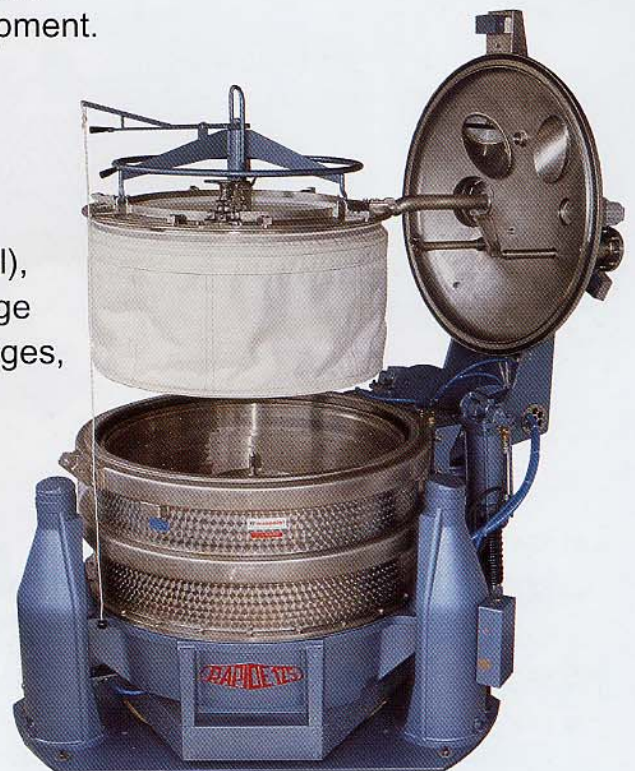
➤ Multipurpose / Flexibility

Basket centrifuges with a discharge method which allows for :

- Complete cake removal (no residual heel),
- Easy access to the inside of the centrifuge
- Simplified cleaning and filter media changes,

➤ Cost Effective

Low investment and operating costs to maintain large scale production.



SC 125 Vx KSA.R

MAIN SPECIFICATION AND TECHNICAL FEATURES :

- **Vertical axis.**
- **Centrifuge Installation :**
Triple suspension (Model SC-KSA) or installed on integral inertia plate with vibration isolators (Model RC-KSA).
- **Materials of construction :**
Coatings : Mild steel, stainless steel, Alloys,
Corrosion-resistant coatings (Halar, Ebonite, PFA, Tefzel ...)
- **Basket speed control :**
By side-mounted motor, controlled by an AC variable frequency drive and belt transmission.
- **Electrical equipment** installed on the centrifuge :
Vaportight or explosion-proof to European or American standards.
- **Vaportightness :**
Suitable for inert gas blanketing : pneumatic barrier between double lip seals and bearings, inert gas ports.
- **Independent controls and electrical equipment.**
- **Safety** devices conforming to the highest standards.
- **Optional fully opening casing** for total accessibility to internal components. Cover, flat or domed, manual, pneumatic, or hydraulic actuation. Static or inflatable sealing gasket. One or two panoramic sight glasses with integral wiper and wash nozzle, diameter dependent on whether the centrifuge is vaportight and the number of accessories installed on the cover.
- **Basket** – sideplate with reinforcing rings or solid alloy construction. Base is alloy lined or solid alloy. Filter bag / removable basket rim installed in a groove located on the upper basket sidewall and locked by safety locking devices.
- **Feed pipe** : fixed (adjustable height and orientation, when machine is stopped) or with "up and down" motion (adjustable frequency and stroke during centrifuge operation) optimizing product distribution over entire basket height.



SC 85 Vx KSA.R

TECHNICAL CHARACTERISTICS

Models SC or RC	Max Speed RPM	Max G Force	Basket						Motor Power KW	Weight	
			Diameter mm	Cake Thickness mm	Height mm	Useful Volume dm ³	Max Load Kg	Filtration area m ²		SC Kg	RC Kg
70 KSA	1400	770	700	240	350	70	90	0.77	4	800	2100
85 KSA	1300	800	850	280	440	125	155	1.16	4	1300	3400
100 KSA	1150	740	1000	346	500	200	240	1.57	10	1900	4950
120 KSA	1000	670	1200	415	600	330	400	2.26	15	2300	6000
125 KSA	900	570	1250	437.5	630	395	495	2.48	16	2700	7050
150 KSA	750	535	1500	525	750	600	750	3.42	16	3400	8850
200 KSA	580	380	2000	776	780	970	1200	4.50	30	7200	18750
					900	1120	1400	5.65		7800	20300

OPTIONAL EQUIPMENT AND AUXILIARIES

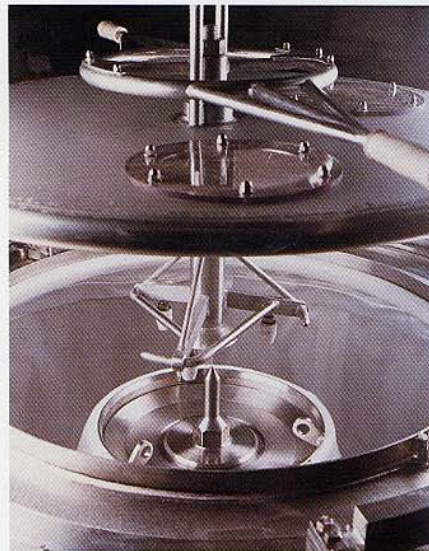
➤ **Cake feeler or level detector** to optimize loading and prevent any risk of overflowing during feeding and washing.

➤ **Cake wash pipe** with adjustable orientation when machine is stopped, with interchangeable nozzles.

➤ **Process lighting** installed on centrifuge cover for viewing inside of machine.

➤ **Semi-automatic filter bag.** Automatic filter bag discharge, and re-alignment of bag bottom when the bag is re-installed in the basket is accomplished by the operator with a special handling device. This assembly has many advantages :

- Less operator intervention,
- Reduced handling,
- Protects product from being contaminated by the operator,
- Prevents operator exposure to the product.



SC 125 Vx KSA.R

➤ **Quick release basket,** for periodic inspections and frequent cleaning for multiproduct applications.

➤ **Clean-in-place (CIP)** with strategically located spray nozzles for cleaning process contact surfaces.

➤ **Fully-opening casing** allowing systematic and visual inspection and integral cleaning of all process contact areas.

➤ **Earth grounding** between static and rotating parts.

➤ **A variety of inerting systems,** oxygen analyzers, single or double liquid receivers.

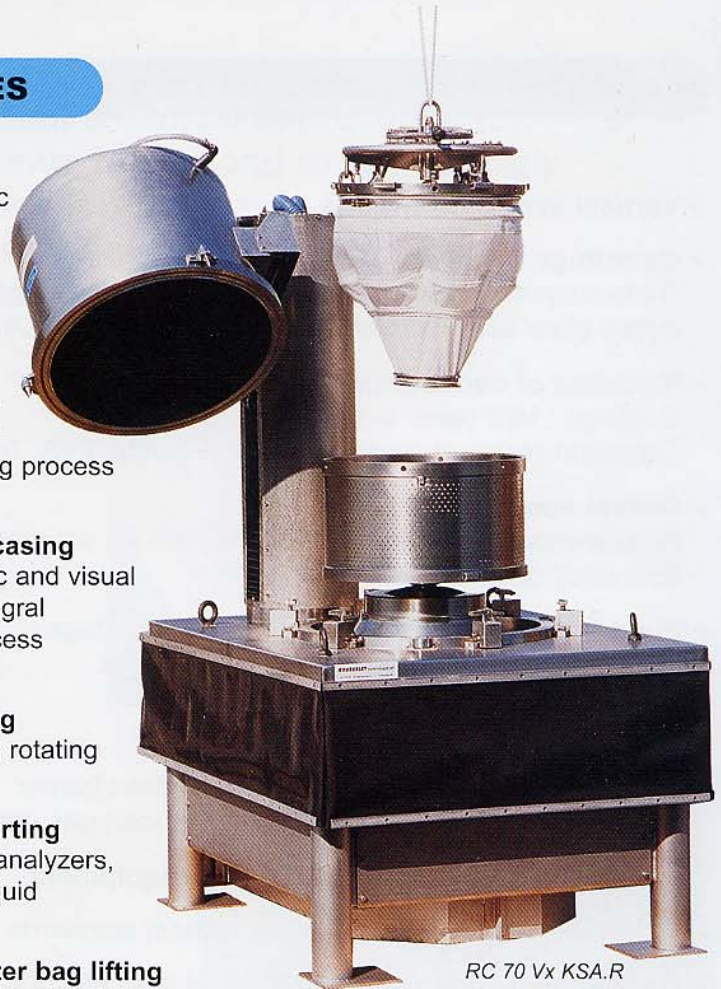
➤ **Basket rim / filter bag lifting mechanisms** for hoisting.

➤ **Double shell casing** for temperature control.

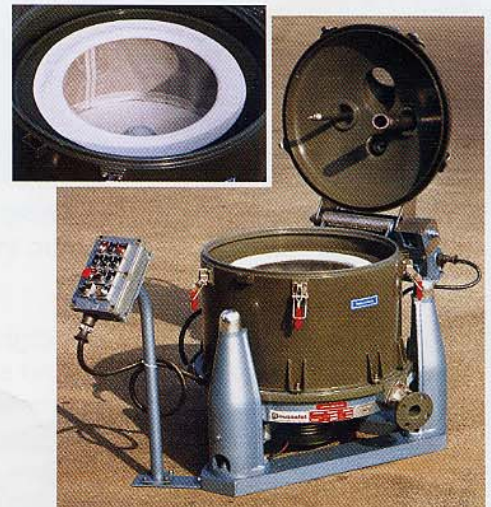
➤ **Polishing grades,** seal materials, filter cloth characteristics tailored to your specific requirements.

➤ **Simplified versions :**

- Single speed, directly coupled motor with disc brake,
- With removable filter bag. The bag is not installed on a removable rim. The basket has a fixed upper rim .



RC 70 Vx KSA.R



SC 70.3 R



Headquarters :
Avenue Rhin et Danube
Zone Industrielle Marenton
07104 ANNONAY - FRANCE

Genas Facility :
Rue de Genève
69740 GENAS - FRANCE

Great Britain:
Parkside House, 17 East Parade
HARROGATE
NORTH YORKSHIRE HG1 5LF

Germany:
Hauptstraße 20
D- 71093
WEIL-IM-SCHONBUCH

USA:
703 West Housatonic St.
Suite L15 - PITTSFIELD
MA 01201

33 (0) 4 75 69 22 11

33 (0) 4 72 79 18 88

44 (0) 1 423 530 093

49 (0) 715 762 881

1 413 499 4818

33 (0) 4 75 67 69 80

33 (0) 4 72 79 18 80

44 (0) 1 423 530 120

49 (0) 715 763 232

1 413 499 5648

E-mail rousselet.sa@rousselet.fr

rousselet.sa@rousselet.fr

rousselet.uk@cent.globalnet.co.uk

rousselet@t-online.de

sales@robotel.com

Web : www.rousselet .com - www.robotel.com

Contact : Chris Evans

Contact : Myriam Patey

Contact : Paul Mc Farland