

66PL0022
CONDENSATE PUMP

66P0001
PRODUCT PUMP

66P0003
PRODUCT PUMP

66P0004
PRODUCT PUMP

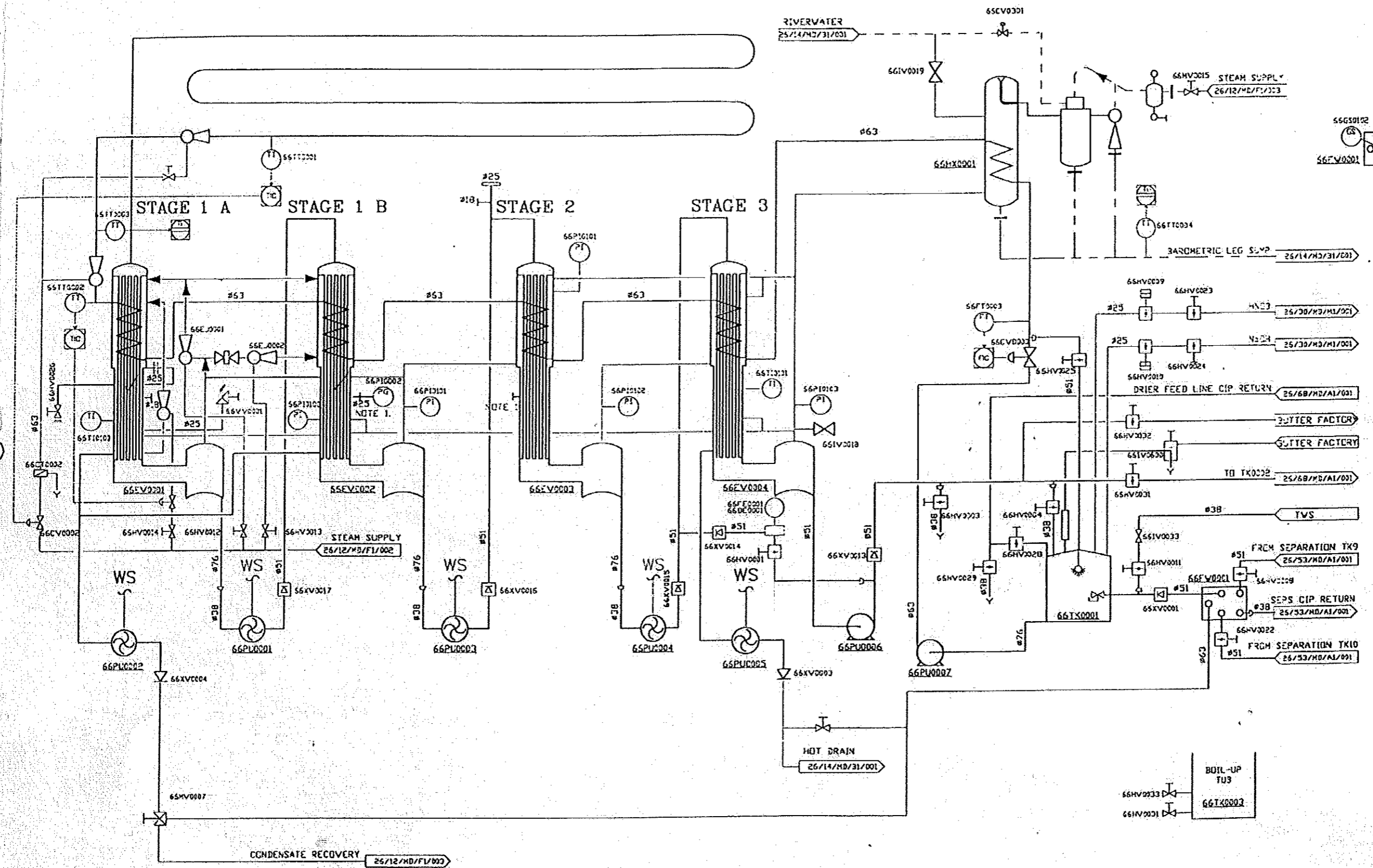
66P0005
CONDENSATE PUMP

66P0006
PRODUCT PUMP

66P0007
PRODUCT PUMP

RIVERWATER
25/14/MD/31/001

STEAM SUPPLY
26/12/MD/FI/002



CONTROLLED COPY
IF STAMP GREEN

| REV | DESCRIPTION | DESIGN | DRAWN | CHECKED / REVIEWED | APPROVED | DATE |
|-----|------------------|--------|-------|--------------------|----------|----------|
| 1 | BY CHANGED TO BY | | | | | 04/06 |
| 2 | DATE CHANGED | | | | | 05/11/07 |
| 3 | CHANGE | | | | | 2/2/07 |
| 4 | AS BUILT | | | | | 1/8/08 |



P & ID

P & I DIAGRAM

SHEET NO. 1
WEIGAND EVAPORATOR
P & I DIAGRAM

| | | | | | |
|---------------------|-------------|----|----|----|------|
| 0 | 10 | 20 | 30 | 40 | 50mm |
| ORIGINAL SCALE: NTR | | | | | |
| CAD FILE: 66MD011 | | | | | |
| 26.66.MD.A1.001 D | | | | | |
| JOB NO. | DRAWING NO. | | | | REV. |