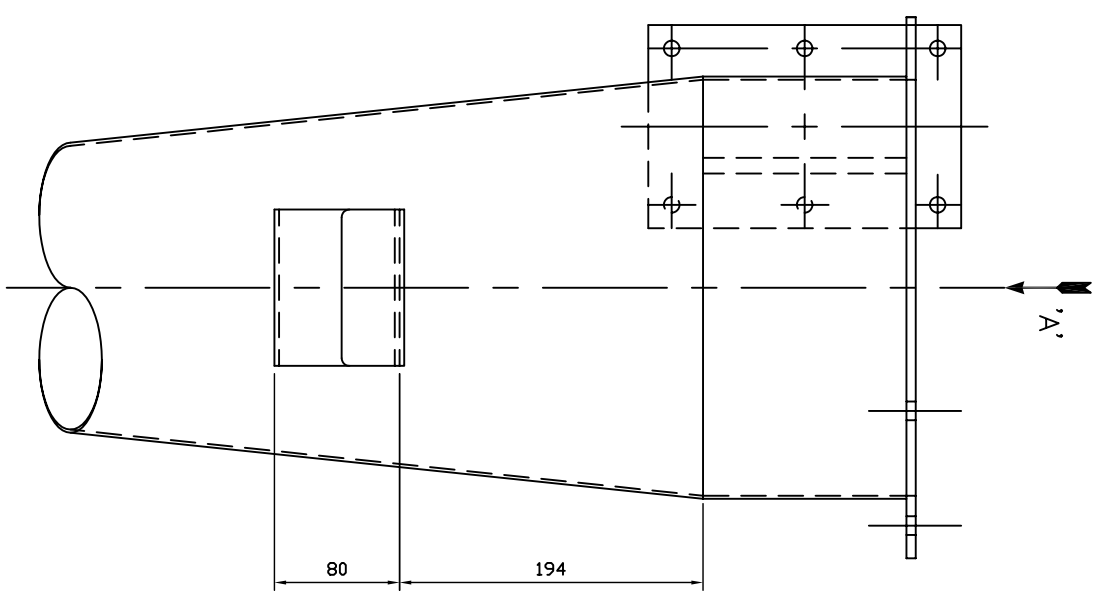
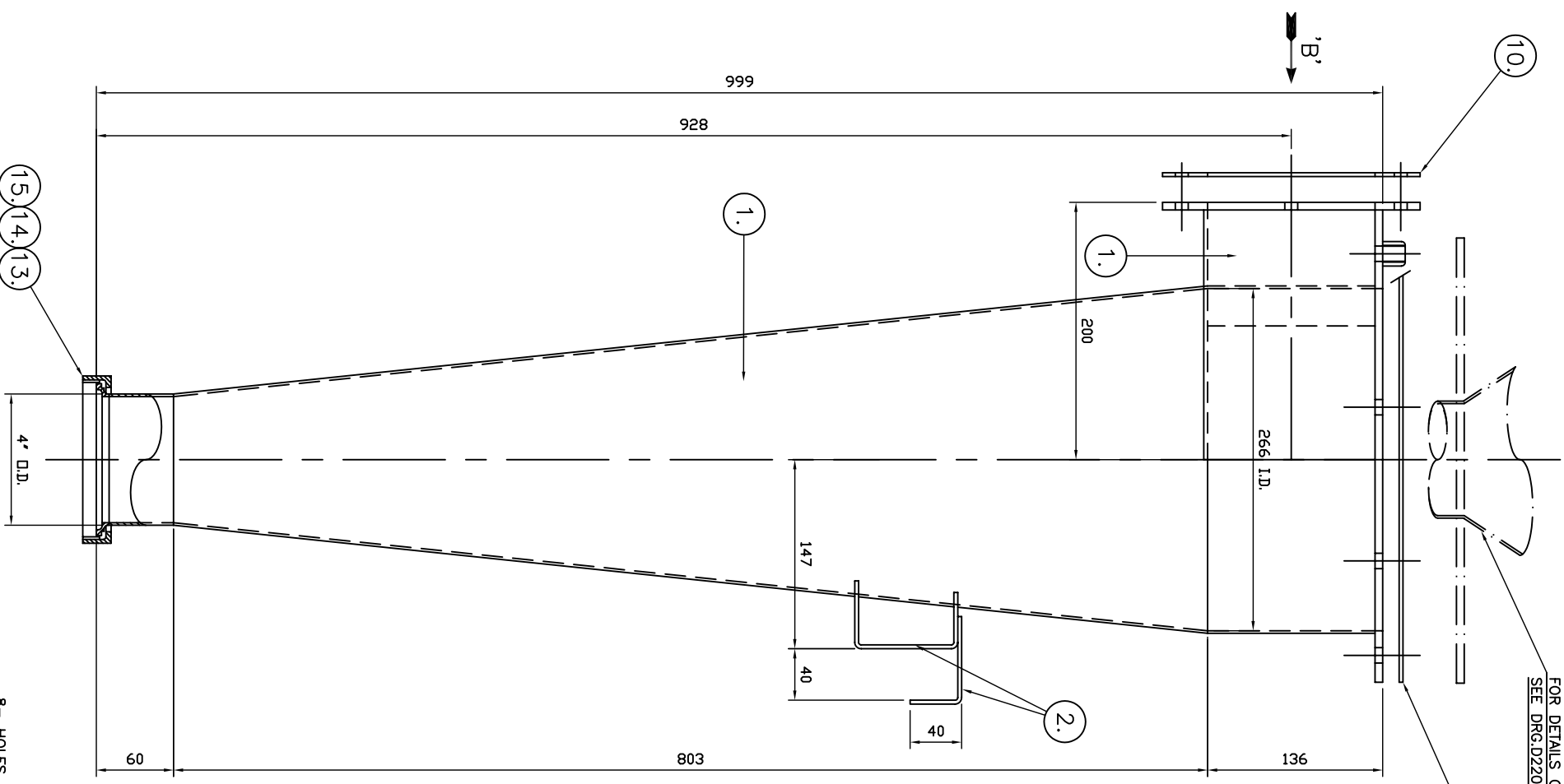
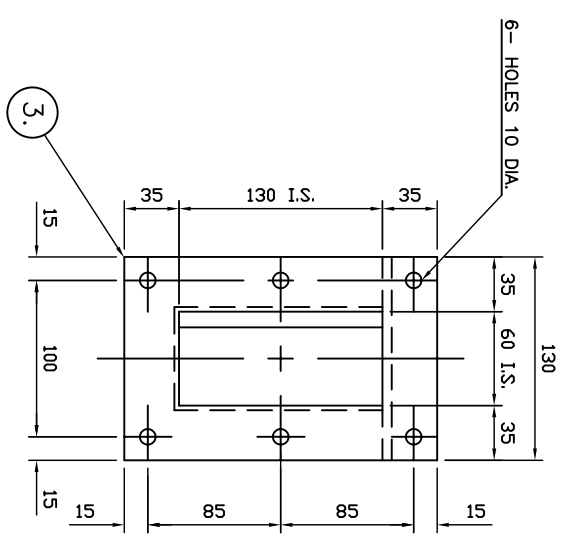
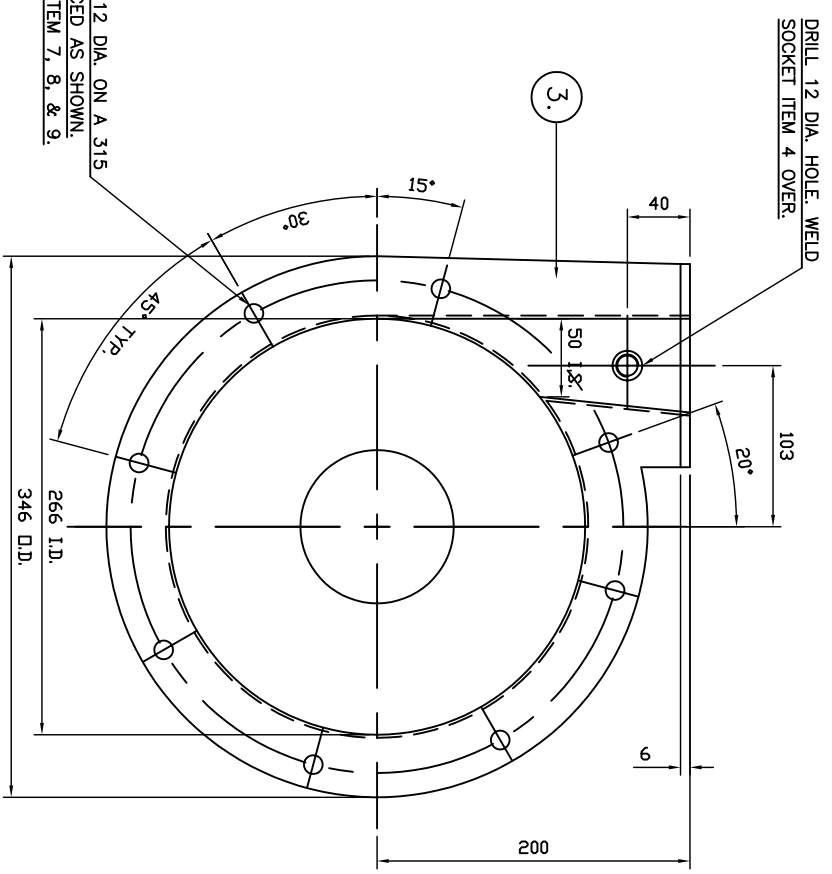


FOR DETAILS OF AIR DISCHARGE  
SEE DRG:D2205/04 SHEET 2.



8- HOLES 12 DIA. ON A 315  
P.C.D. SPACED AS SHOWN.  
FIT BOLTS ITEM 7, 8, & 9.



ITEM	DESCRIPTION	QTY	SIZE	WT	MATERIAL
1.	SHEET.	A/R.	2 THK.		304 ST. STL.
2.	SHEET.	A/R.	3 THK.		304 ST. STL.
3.	SHEET.	A/R.	6 THK.		304 ST. STL.
4.	HALF SOCKET.	2.	1/4" B.S.P		304 ST. STL.
5.	HALF SOCKET.	1.	3/4" B.S.P		304 ST. STL.
6.	TAPER PLUG.	1.	3/4" B.S.P		304 ST. STL.
7.	HEX. HD. SETBOLT.	8.	M10X30 LG		A2 ST. STL.
8.	HEX. NUT.	8.	M10		A2 ST. STL.
9.	WASHER.	16.	M10		A2 ST. STL.
10.	GASKET.	1.	DRG. D2205/16	ITEM 5.	
11.	GASKET.	1.	DRG. D2205/16	ITEM 6.	
12.	GASKET.	1.	DRG. D2205/17	ITEM 1.	
13.	TUBE.	50mm	4"O.D.X2THK.		304 ST. STL.
14.	R.J.T. LINER.	1.	4" O.D.		304 ST. STL.
15.	R.J.T. UNION NUT.	1.	4" O.D.		304 ST. STL.

NOTES!  
ALL WELDS TO BE CONTINUOUS AND GAS TIGHT  
UNLESS OTHERWISE STATED.  
ALL INTERNAL WELDS TO BE GROUND FLUSH TO 180 GRIT.  
EXTERNAL WELDS AS LAID AND ACID CLEANED.  
EXTERNAL WELDS TO FLANGES MAY BE STITCH WELDED.  
EXTERNAL SURFACES TO BE BEAD BLAST FINISH GRADE AD.  
WITH MIL SPEC :- MIL-G-9954A. GLASS BEADS.  
WELD PROCEDURES TO BE APPROVED TO EN288/3.  
WELDER TEST CERTIFICATES TO BE PROVIDED TO EN287/1.  
ALL SHEET MATERIAL TO BE '2B' FINISH.  
MATERIAL MILL CERTIFICATES RECD. FOR ALL ST. STL. ITEMS.  
CYCLONE ESTIMATED WEIGHT :- 16 KGS.  
AIR DISCHARGE SECTION ESTIMATED WEIGHT :- 6 KGS.  
DESIGN TEMPERATURE :-  
DESIGN PRESSURE :-  
WORKING PRESSURE :-  
DESIGN VACUUM :-

NO	REVISION	DATE	BY	CHKD
1				

**DRYTEC**  
Specialists in Drying Technology  
Dytec Ltd, Morley Road, Tonbridge,  
Kent, TN9 1RA, England.  
Tel: 01732 362611 Fax: 01732 770776  
E-mail: sales@drytecltd.com

3" RING DRYER.

USED ONE

TAKEN FROM: DO NOT SCALE IF IN DOUBT ASK.

SCALE: 1 : 25

DRAWN BY: M.C.R.W. JOB No: DRP2205

CHECKED BY: DATE: (14-03-97) D2205/04

DRAWING NUMBER SHEET 1 OF 2

