

SPECIFICATION:

Perry 300mm Dia S/St Screw Conveyor

Duty: 0.9t/hr @ 120kg/m³
 BSP Sockets For Steam Inlets

Inclined @ 25°

Case: 5mm S/St Trough/3mm Lid

Drive: 3kw SMG/M @ 20-60rpm Via Inverter

[0.9tph @ 40rpm]

Right Hand Drive @ Outlet End

Gland Shaft Seal & Flanged Bearings

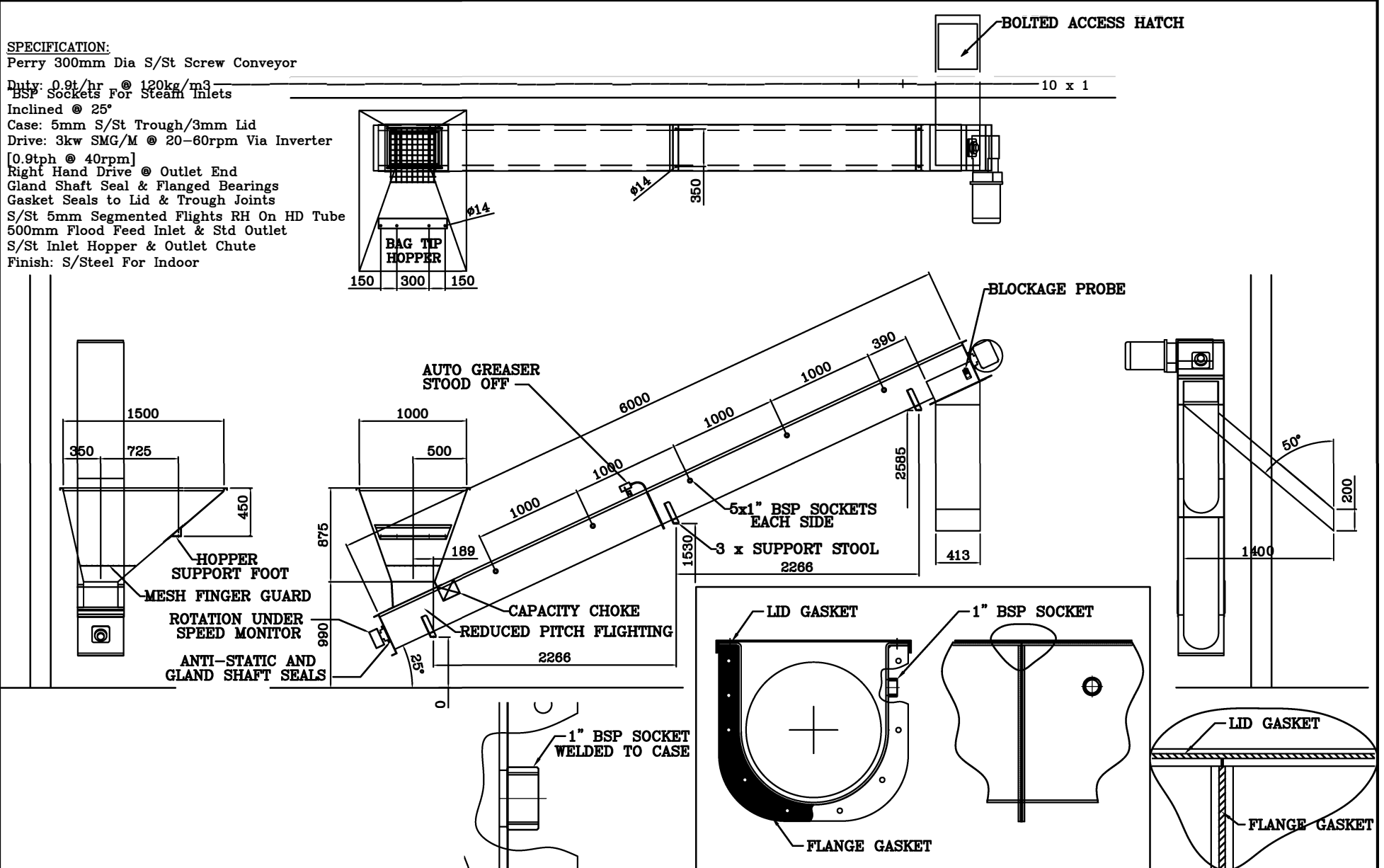
Gasket Seals to Lid & Trough Joints

S/St 5mm Segmented Flights RH On HD Tube

500mm Flood Feed Inlet & Std Outlet

S/St Inlet Hopper & Outlet Chute

Finish: S/Steel For Indoor



			MACHINE	Ø300mm ST/STEEL SCREW CONV	MATERIAL DETAILS	All Dimensions in mm Tolerances:- U.N.O. General ±0.5mm Weld Assy's ±1.0mm 	QTY. PER	DATE	DRN BY	SCALE
			ASSEMBLY	LAYOUT DETAILS			1	28-05-21	R>B	N.T.S
A	ISSUED FOR APPROVAL	28-05-21	PART	GENERAL ASSY & FEATURES			DRG No.		REV	SHT
REV	DETAIL	DATE	PUNCH:-	LAYOUT:-	PROFILE:-		AV1356-L0		A	1